



WALLTITE®

The airtight insulation solution

CI/SfB | | (42) | Yn6 | (M2)
October 2011

Refurbished masonry wall insulation (steel stud)

Data sheet 3.3

 **BASF**

The Chemical Company

Refurbished masonry wall insulation (steel stud) Data sheet 3.3

Description

WALLTITE can be applied directly onto a solid masonry wall without the need for traditional adhesion promoters or mechanical fixings.

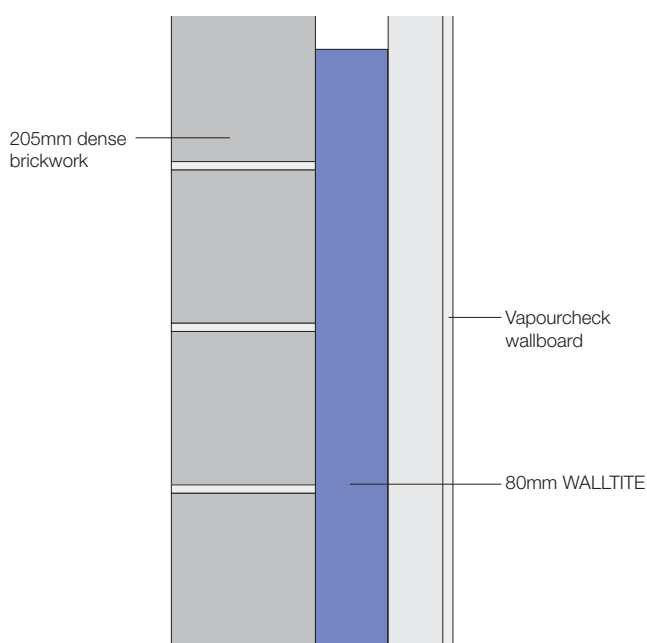
The foam will engage any light steel framework to provide a more solid, secure wall when compared to other insulation methods.

The resulting continuous insulation and air barrier system will provide a cleaner, healthier more comfortable environment for any "hard to treat" home situation.

Certification

BBA Certificate No. 11/4816.

WALLTITE has undergone various performance tests. Certificates are available on request.



Technical data

Specification:	Solid masonry wall
Internal dry lining	Upgrading retained thermal element
Light steel-frame construction: Cold frame or hybrid type	
Stud depth:	100mm
Stud spacings:	400mm
Flange width:	Not exceeding 50mm p : 0.780

U-value calculation

Construction details (solid masonry wall)	Thickness (mm)
Outside surface resistance	
Render (BS 5250)	20
Brick, dense, external	205
WALLTITE	80
Airspace in cavity wall construction (BS 5250)	
Vapourcheck wallboard	12.5
Inside surface resistance	
U-value	0.27W/m²K

(Correction for mechanical fasteners, Delta Uf = 0.000W/m²K)

(Correction for air gaps, Delta Ug = 0.000W/m²K)



n5Plus

